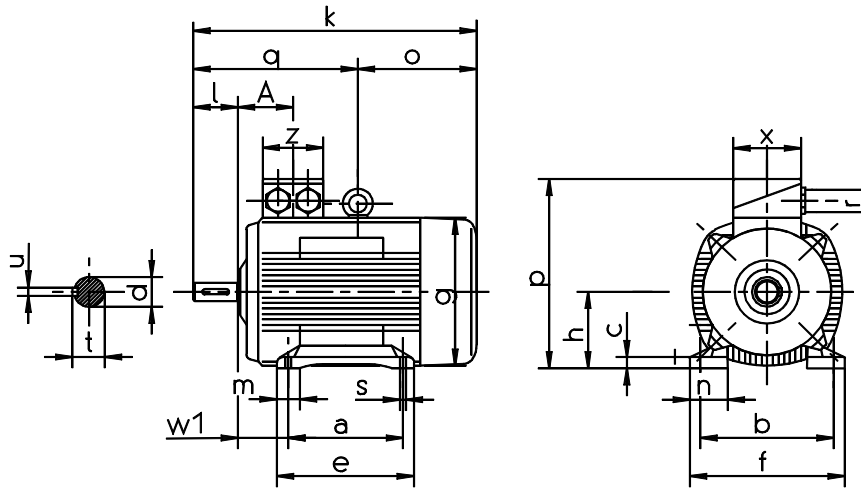
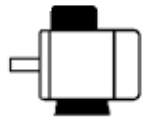


B3 dimensions

Synchronous 3-phase generators with permanent excitation
Cast-iron housing

Style:
IM B3
Terminal box:
as standard, on top



Fabrik elektr. Maschinen GmbH

Siemensstr. 7, D-35394 Giessen

Phone +49 (0)641 / 7969-(0)

Fax +49 (0)641 / 73645

Contact persons/e-mail:

Ewald Ohl, Maik Will; extension.: -17
ewald.ohl@huebner-giessen.com
maik.will@huebner-giessen.com

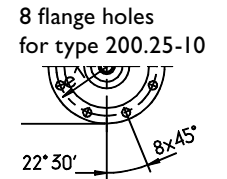
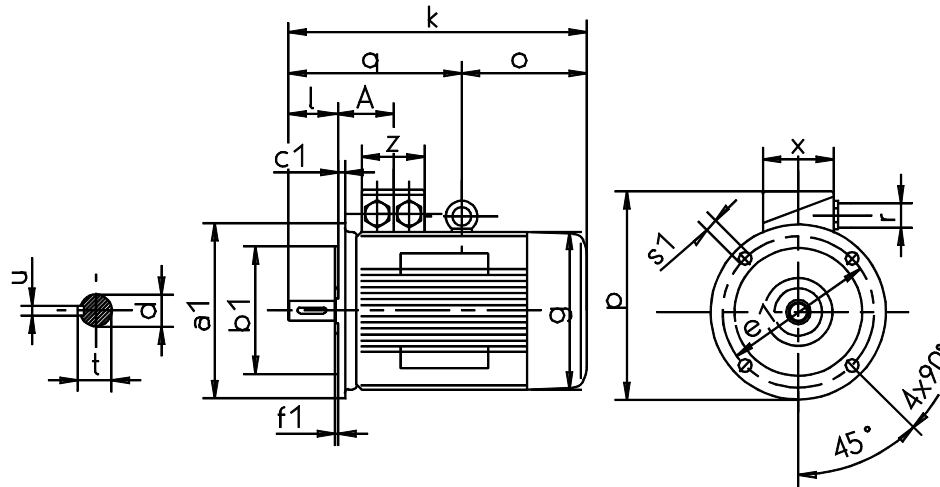
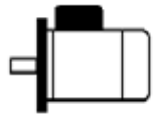
DSG P series

Machine type	Dim.	71.07-0,8	71.07-8	80.10-8	112.14-10	112.17-10	112.16-10	132.15-10	132.20-10	160.20-10	200.25-10
Overall length	k	242	242	297	357	391	479	481	529	609	757
Overall height, with terminal box	p	140	140	200	249	249	290	331	331	402	500
Shaft length	l	30	30	50	60	60	80	80	80	110	140
Shaft diameter	d	14	14	22	28	28	32	38	38	48	60
Max. shaft thickness with fitting key	t	16,1	16,1	24,5	31	31	35	41	41	51,5	64
Wide fitting key	u	5	5	6	8	8	10	10	10	14	18
Foot length	e	108	108	147	180	180	172	180	218	257	322
Mounting hole spacing	a	90	90	100	140	140	140	140	178	210	267
Mounting hole diameter	s	7	7	10	12	12	12	12	12	15	19
Spacing: shaft shoulder to mounting hole	w1	45	45	50	70	70	70	89	89	108	133
Foot width	f	140	140	152	224	224	226	256	256	296	372
Mounting hole spacing	b	112	112	125	190	190	190	216	216	254	318
Fan cover diameter	g	138	138	157	196	196	217	258	258	313	390
Centre height	h	71	71	80	112	112	112	132	132	160	200
Max. Axialkraft	F_a	0,145 kN	0,145 kN	0,44 kN	0,52 kN	0,52 kN	1,4 kN	1,1 kN	1,1 kN	2,5 kN	4,3 kN
Max. radial force (½ shaft extension)	F_r	0,29 kN	0,29 kN	0,77 kN	0,98 kN	0,98 kN	1,7 kN	2,6 kN	2,6 kN	3,8 kN	5,6 kN
Mass moment of inertia [kgm ²]	J	0,00073	0,00073	0,00375	0,01225	0,0139	0,023	0,043	0,053	0,145	0,440
Weight	m	6,5 kg	6,5 kg	18 kg	37 kg	39 kg	53 kg	70 kg	86 kg	136 kg	265 kg

B5 dimensions

Synchronous 3-phase generators with permanent excitation
Cast-iron housing

Style:
IM B5
Terminal box:
as standard, on top



Fabrik elektr. Maschinen GmbH

Siemensstr. 7, D-35394 Giessen

Phone +49 (0)641 / 7969-(0)

Fax +49 (0)641 / 73645

Contact persons/e-mail:

Ewald Ohl, Maik Will; extension.: -17
ewald.ohl@huebner-giessen.com
maik.will@huebner-giessen.com

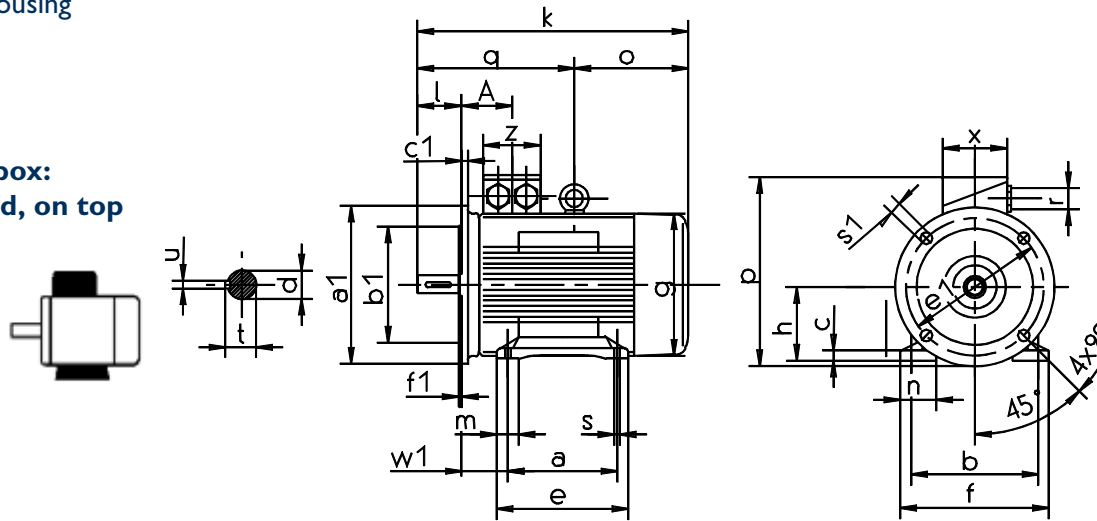
DSG P series

Machine type	Dim.	71.07-0,8	71.07-8	80.10-8	112.14-10	112.17-10	112.16-10	132.15-10	132.20-10	160.20-10	200.25-10
Overall length	k	242	242	297	357	391	479	481	529	609	757
Overall height, with terminal box	p	201,5	201,5	220	262	262	328	374	374	417	525
Shaft length	l	30	30	50	60	60	80	80	80	110	140
Shaft diameter	d	14	14	22	28	28	32	38	38	48	60
Max. shaft thickness with fitting key	t	16,1	16,1	24,5	31	31	35	41	41	51,5	64
Wide fitting key	u	5	5	6	8	8	10	10	10	14	18
Fan cover diameter	g	138	138	157	196	196	217	258	258	313	390
Flange diameter	a1	160	160	200	250	250	300	350	350	350	450
Pitch circle diameter	e1	130	130	165	215	215	265	300	300	300	400
Seating face diameter	b1	110	110	130	180	180	230	250	250	250	350
Spacing: seating face to end shield	f1	3,5	3,5	3,5	4	4	4	5	5	5	5
Wide end shield	c1	10,3	10,3	10	11	11	12	13	13	13	16
Flange hole diameter	s1	9	9	11	14	14	14	18	18	18	18
Max. axial force	F_a	0,145 kN	0,145 kN	0,44 kN	0,52 kN	0,52 kN	1,4 kN	1,1 kN	1,1 kN	2,5 kN	4,3 kN
Max. radial force (½ shaft extension)	F_r	0,29 kN	0,29 kN	0,77 kN	0,98 kN	0,98 kN	1,7 kN	2,6 kN	2,6 kN	3,8 kN	5,6 kN
Mass moment of inertia [kgm ²]	J	0,00073	0,00073	0,00375	0,01225	0,0139	0,023	0,043	0,053	0,145	0,440
Weight	m	6,5 kg	6,5 kg	18 kg	37 kg	39 kg	53 kg	70 kg	86 kg	136 kg	265 kg

B35 dimensions

Synchronous 3-phase generators with permanent excitation
Cast-iron housing

Style:
IM B35
Terminal box:
as standard, on top



Fabrik elektr. Maschinen GmbH

Siemensstr. 7, D-35394 Giessen

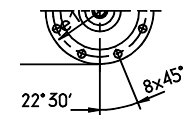
Phone +49 (0)641 / 7969-(0)

Fax +49 (0)641 / 73645

Contact persons/e-mail:

Ewald Ohl, Maik Will; extension.: -17
ewald.ohl@huebner-giessen.com
maik.will@huebner-giessen.com

8 flange holes
for type 200.25-10



DSG P series

Machine type	Dim.	71.07-0,8	71.07-8	80.10-8	112.14-10	112.17-10	112.16-10	132.15-10	132.20-10	160.20-10	200.25-10
Overall length	k	242	242	297	357	391	479	481	529	609	757
Overall height, with terminal box	p	140	140	200	249	249	290	331	331	402	500
Shaft length	l	30	30	50	60	60	80	80	80	110	140
Shaft diameter	d	14	14	22	28	28	32	38	38	48	60
Max. shaft thickness with fitting key	t	16,1	16,1	24,5	31	31	35	41	41	51,5	64
Wide fitting key	u	5	5	6	8	8	10	10	10	14	18
Foot length	e	108	108	147	180	180	172	180	218	257	322
Mounting hole spacing	a	90	90	100	140	140	140	140	178	210	267
Mounting hole diameter	s	7	7	10	12	12	12	12	12	15	19
Spacing: shaft shoulder to mounting hole	wl	45	45	50	70	70	70	89	89	108	133
Foot width	f	140	140	152	224	224	226	256	256	296	372
Mounting hole spacing	b	112	112	125	190	190	190	216	216	254	318
Fan cover diameter	g	138	138	157	196	196	217	258	258	313	390
Centre height	h	71	71	80	112	112	112	132	132	160	200
Flange diameter	al	160	160	200	250	250	300	350	350	350	450
Pitch circle diameter	el	130	130	165	215	215	265	300	300	300	400
Seating face diameter	bl	110	110	130	180	180	230	250	250	250	350
Spacing: seating face to end shield	fl	3,5	3,5	3,5	4	4	4	5	5	5	5
Wide end shield	cl	10,3	10,3	10	11	11	12	13	13	13	16
Flange hole diameter	sl	9	9	11	14	14	14	18	18	18	18
Max. axial force	F_a	0,145 kN	0,145 kN	0,44 kN	0,52 kN	0,52 kN	1,4 kN	1,1 kN	1,1 kN	2,5 kN	4,3 kN
Max. radial force (½ shaft extension)	F_r	0,29 kN	0,29 kN	0,77 kN	0,98 kN	0,98 kN	1,7 kN	2,6 kN	2,6 kN	3,8 kN	5,6 kN
Mass moment of inertia [kgm ²]	J	0,00073	0,00073	0,00375	0,01225	0,0139	0,023	0,043	0,053	0,145	0,440
Weight	m	6,5 kg	6,5 kg	18 kg	37 kg	39 kg	53 kg	70 kg	86 kg	136 kg	265 kg